



Il Trovatore

Rental Information	3
Production Notes	4
Technical Schedule	5
Line Set Schedule	8
Rail Cue Sheet	11
Minis	12
Props List	13
Costume Information & Photos	14
Production Photos	32

Contact Information

For rental pricing and availability:

Production Assistant:

Katherine Cattrysse
(612) 342-9582
katherine@mnopera.org

For further renting inquiries:

Production Director:

Kevin Ramach
(612) 342-9583
kramach@mnopera.org

For production technical information:

Technical Director:

Mike McQuiston
(612) 342-9581
mike@mnopera.org

For surtitle rentals and inquiries:

Artistic Administrator:

Roxy Stouffer-Cruz
(612) 342-9571
roxy@mnopera.org

For costume rentals and inquiries:

Costume Shop Manager:

Erica Burds
(612) 342-9576
eburds@mnopera.org

For props rentals and inquiries:

Properties Master:

TBD
(612) 342-9589

The Minnesota
OPERA
620 North 1st Street
Minneapolis, MN 55401
toll free: (800) 676-6737
fax: (612) 333-0869

Rental Information

Surtitles: (additional rental required)	Contact Roxy Stouffer-Cruz at 612-342-9571
Insurance Coverage Required:	\$200,000
Royalties & Production Rights:	
Set Designer (Allen Moyer)	10% of rental fee
Costume Designer (Jessica Jahn)	10% of rental fee – not less than \$4000
Lighting Designer (D.M. Wood)	Right of first refusal or \$5,625
Projection Designer (Greg Emetaz)	\$1,000 from an Opera America Level 2 or below company \$2,000 from an Opera America Level 1 and/or a company outside of North America
Scenery, Wardrobe & Video Supervisors Required:	For load-in to rehearsal hall, theater and strike To coordinate fittings and strike For Watch Out System
Fees (<i>subject to future increases</i>)	\$465.00 per work day \$250.00 per travel day
Housing	Provided by renter
Per Diem	Federal maximum amount per city of engagement
Transportation	Provided by renter
Other:	
Approximate Warehouse Costs:	\$3000 each way
Notice for Loading:	2 weeks
Number of Vans:	2 - 53' air ride logistics vans (rail shipment not permitted)

TECHNICAL & WATCH OUT SYSTEM INFORMATION

Please contact Mike McQuiston, Technical Director, at (612) 342-9581 or mike@mnopera.org. Video Supervisor required when renting the Watch Out System.

- 1 BARCO CLM R10 DLP Projector
- 6 BARCO G5-5K Projectors
- Watch Out System

HISTORY OF PREVIOUS USAGE

Company	Year
The Minnesota Opera	2008
Seattle Opera	2010

PLEASE NOTE

If the production is used, all production materials must be returned within thirty days of the final performance. A payment of \$50.00 will be required if said materials are not returned.

Production Notes

CAST

Number of Principals: 5 men - 3 women
Number of Chorus: 27 men - 12 women

ARTISTIC STAFF

Conductor	Giovanni Reggioli
Stage Director	Kevin Newbury
Assistant Director	Octavio Cardenas
Set Designer	Allen Moyer
Lighting Designer	D.M. Wood
Costume Designer	Jessica Jahn
Projection Designer	Greg Emetaz
Wig/Make-up Designer	Jason Allen

PRODUCTION STAFF

Costume Manager	Erica Burds
Technical Director	Mike McQuiston
Surtile Coordinator	Roxy Stouffer-Cruz
Production Stage Manager	Alex Farino
Assistant Stage Manager	Carissa Bombard
Assistant Stage Manager	Casey Martin
Properties Master	S. Dean Hawthorne
Lighting Coordinator	Charles Craun
Charge Painter	Jeffery Murphey
Production Carpenter	JC Amel
Projection Programmer	Marty Reitz

OWNERSHIP

This production of *Il Trovatore* is owned by The Minnesota Opera. The Scenery, Props and Costumes for this production were built by The Minnesota Opera.

SHOPS

Sets constructed by:	The Minnesota Opera Scene Shop
Costumes constructed by:	The Minnesota Opera Costume Shop
Wigs constructed by:	Jason Allen

CREW

Load-in Crew: 16 Carpenters, 8 Electrics, 4 Sound, 2 Props, 4 Transition

Running Crew: 5 Carpenters (1 Fly, 4 Deck), 5 Electrics (1 Board, 1 Surtile, 1 Video, 2 Deck), 2 Props, 2 Sound, 3 Dressers, 1 Laundry

Date of Load-in: September 14, 2008

MUSIC & ROYALTY

Composer:	Giuseppe Verdi
Librettist:	Salvadore Cammerano after the play <i>El trovador</i> by Antonio García Gutiérrez
Total number of pit musicians:	56
Breakdown of pit musicians:	10 Violin I, 8 Violin II, 6 Viola, 6 Cello, 4 Bass, 2 Flute, 2 Oboe, 2 Clarinet, 2 Bassoon, 4 Horn, 2 Trumpet, 3 Trombone, 1 Timpani, 1 Cimballo, 2 Percussion, 1 Harp

RUNNING TIMES

Orchestra Tune + Maestro Bow	01:30
Acts 1 and 2	64:00
Intermission	20:00
Orchestra Tune + Maestro Bow	01:30
Acts 3 and 4	60:00
<hr/> Total	2:24:00
Total with Bows	2:30:00

Technical Schedule

SHOW CREW:

CARP 5 (1FLY, 4 DECK)
ELEC 5 (1 BOARD, SURTITLE, 1 VIDEO, 2 DECK)
PROPS 2
SOUND 2
DRESSERS 3
LAUNDRY 1

NOTE: CALL DRESSERS AS NOTED.

WED 9/10

8AM-5PM

PRE-HANG ELECTRICS

CARP 8 (3 riggers)
ELEC 14
PROPS
SOUND
TRANS 2

SUN. 9/14

8AM-11:30PM

LOAD IN SCENERY

CARP. 16
ELEC 8
SOUND 4
PROPS 2
TRANS. 4
ADD 4 ELECTRICS @ 2PM

MON. 9/15

8AM- 11:30PM

PRODUCTION & FOCUS CALL
PIT

CARP 12
ELEC 12
SOUND 2
PROPS 4

TUES. 9/16

8AM-5PM

PRODUCTION CALL
PROP LOAD-IN
LIGHTING

CARP 5
ELEC 5
PROPS 2
SOUND 4
TRANS. 2
TECH'S 3 (LOBBY)
1 DRESSER @ 2pm

COSTUME LOAD IN

6PM-11PM

PIANO DRESS
7PM CURTAIN

SHOW CREW

NOTE: 3 DRESSERS @ 5:30PM

NOTE: OASIS CALLS IN THE AM FOR ½ HOUSE CREW.

WED. 9/17

8AM-NOON

PRODUCTION CALL
LIGHTING

CARP 5
ELEC 5
PROPS 2
SOUND 2

NOTE: OASIS CALLS IN THE AM FOR ½ HOUSE CREW.

1PM-5PM

PIANO TECH/ DRESS
1:30 PM CURTAIN

SHOW CREW

NOTE: 1 DRESSER @ 12:30pm

Laundry will be done during the Day Tech

6PM- 11PM
SHOW CREW
NOTE: 1 DRESSER @ 6:00pm
NOTE: 2 DRESSERS @ 7:00pm
NOTE: ADD ONE PROP FOR THE PIT

ORCHESTRA DRESS
7:30PM CURTAIN

THUR 9/18

8AM-5PM
SHOW CREW
1 DRESSER @ TBD

PRODUCTION/LIGHTING
LAUNDRY CALL

6PM- 11PM
SHOW CREW
NOTE: 1 DRESSER @ 6:00pm
NOTE: 2 DRESSERS @ 7:00pm

FINAL ORCHESTRA DRESS
7:30PM CURTAIN

FRI 9/19

TBD
1 DRESSER @ TBD

LAUNDRY DAY CALL

PERFORMANCE #1

SAT 9/20

6:30PM
SHOW CREW
NOTE: 1 DRESSER @ 6:30PM
NOTE: 2 DRESSERS @ 7:30PM
• Striking of needed dressing rooms for SPCO will occur after show

8PM CURTAIN

SUN 9/21

SPCO

MON 9/22

1 DRESSER @ TBD

LAUNDRY DAY CALL

TUES 9/23

SPCO RESTORE

PERFORMANCE #2

TUES 9/23

6PM
TBD
7PM
SHOW CREW
NOTE: 1 DRESSER @ 6PM
NOTE: 2 DRESSERS @ 7PM

CONT
7:30PM CURTAIN
SHOW CALL

PERFORMANCE #3

THUR 9/25

6PM
TBD
7PM
SHOW CREW
NOTE: 1 DRESSER @ 6PM
NOTE: 2 DRESSERS @ 7PM

CONT
7:30PM CURTAIN
SHOW CALL

FRI 9/26

DRESSER 1@ TBD

LAUNDRY DAY CALL

PERFORMANCE #4

SAT 9/27

6PM
TBD
7PM
SHOW CREW
NOTE: 1 DRESSER @ 6PM
NOTE: 2 DRESSERS @ 7PM

CONT
7:30PM CURTAIN
SHOW CALL

PERFORMANCE #5

SUN 9/28

12:30

TBD

1:30PM

SHOW CREW

NOTE: 1 DRESSER @ 12:30PM

NOTE: 2 DRESSERS @ 1:30PM

***Costume strike will likely happen after the show (TBD)**

CONT

2: 00PM CURTAIN

SHOW CALL

MON 9/29

8AMPM-8PM

CARP. 18 (3 RIGGERS)

ELEC 14

PROPS 4

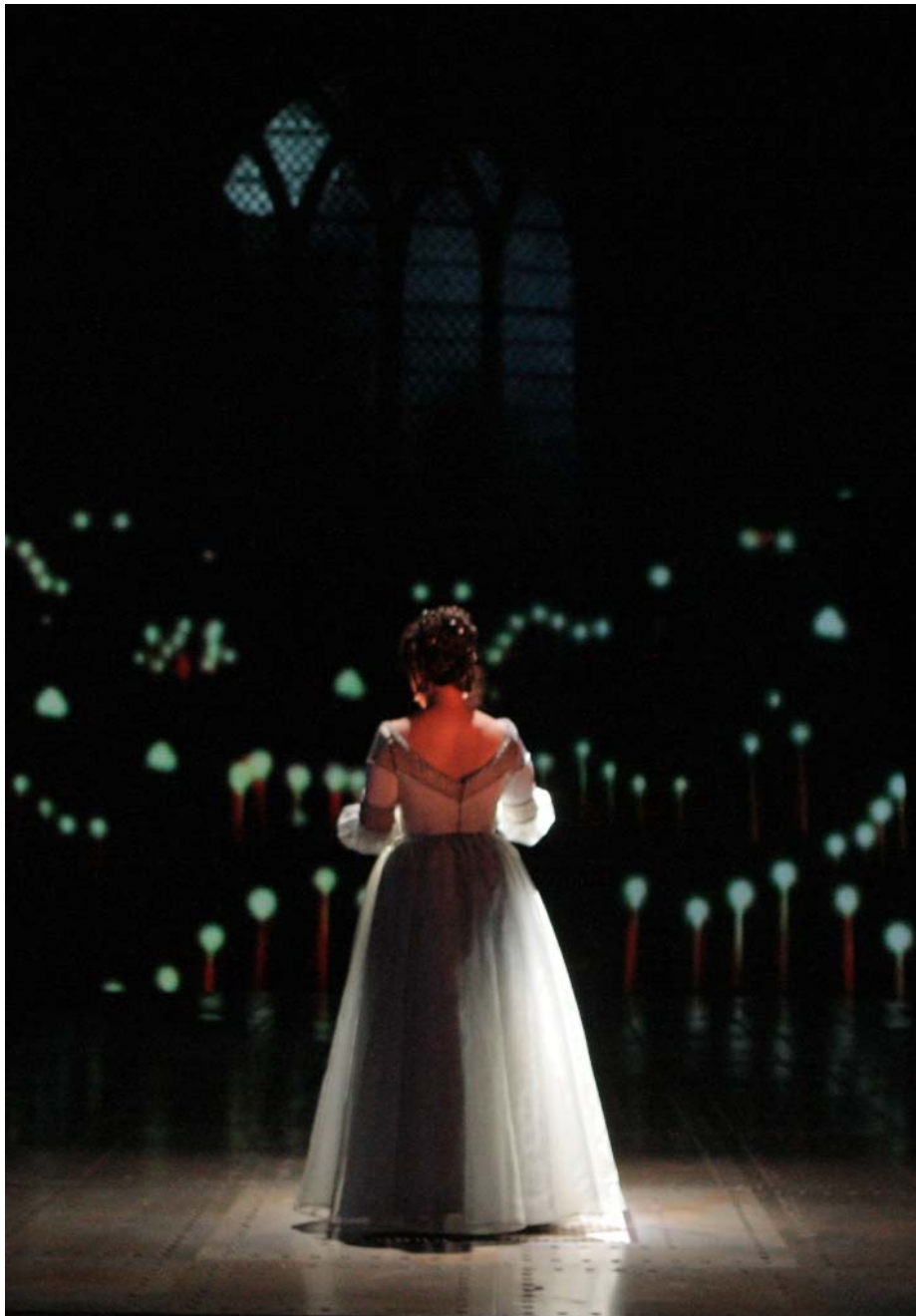
SOUND 4

TECH'S 3 (LOBBY)

TRANS 4

LOAD OUT

RESTORE



Line Set Schedule

P H	LINE SET	PLASTER LINE	BATTEN LENGTH	OMT HOUSE PLOT	PRODUCTION HANGING PLOT	SCENE	CO	Sizes (WxHxD)	WT	TRIM (LO/HI)	NOTES
	NA		NA		Surtitle Screen	ALL	MOC	3'-0"x24'-0"	40	28'6"	HUNG FROM #1 CATWALK
	PL	0'-0"		Plaster Line							
	FC	1'-0"		Fire Curtain							
	1	1'-8"	86'	House Teaser	PORTAL BORDER		OCPA	86X12			HANG CENTER
	2	2'-4"	86'	House Curtain	BLACK SCRIM						
	3	3'-0"	86'	No. 1 Portal Border	BOC						
	4	3'-6"	86'	No. 1 Portal Legs							
	WELL										
	5	4'-6"	86'	No. 1 Lighting Truss	#1 ELECTRIC						
	6	5'-0"	62'	Trapped By Truss							
	7	5'-6"	62'	General Purpose Set	#1 FOCUS TRACK						
	8	6'0"	62'	General Purpose Set	#1 BORDER						
	9	0	62'	General Purpose Set	LEGS		OCPA	86X12			HANG CENTER
	10	7'-0"	62'	Restricted Use Set	DS COLUMNS						
	11	7'-6"	62'	Orchestra Ceiling	ORCH CEILING						
	12	8'-0"	62'	Restricted Use Set							
	13	8'-6"	62'	General Purpose Set	#2 ELECTRIC						
	14	9'-0"	62'	General Purpose Set							
	15	9'-6"	86'	General Purpose Set							
	16	10'-0"	86'	No. 1 Black Border	#2 FOCUS TRACK						
	17	10'-6"	86'	No. 1 Black Legs							
	18	11'-0"	62'	General Purpose Set	#3 ELECTRIC						
	19	11'-6"	62'	General Purpose Set							
	WELL										
	20	12'-6"	62'	General Purpose Set							
	21	13'-0"	62'	General Purpose Set							
	22	13'-6"	62'	General Purpose Set							
	23	14'-0"	62'	General Purpose Set	#3 FOCUS TRACK						
	24	14'-6"	62'	General Purpose Set							
	25	15'-0"	62'	General	#4 ELECTRIC						

				Purpose Set						
26	15'-6"	62'	General Purpose Set							
27	16'-0"	62'	General Purpose Set	#2 BORDER		OCA	86X12			HANG CENTER
28	16'-6"	62'	General Purpose Set	LEGS						
29	17'-0"	86'	No. 2 Black Border	MS COLUMNS						
30	17'-6"	86'	No. 2 Black Legs	#5 ELECTRIC						
31	18'-0"	86'	General Purpose Set							
32	18'-6"	62'	General Purpose Set	#4 FOCUS TRACK						
33	19'-0"	62'	General Purpose Set							
34	19'-6"	62'	General Purpose Set	ACT 2 BIG CROSS						
WELL										
35	20'-6"	62'	General Purpose Set							
36	21'-0"	62'	General Purpose Set							
37	21'-6"	62'	General Purpose Set							
38	22'-0"	62'	General Purpose Set							
39	22'-6"	62'	General Purpose Set							
40	23'-0"	62'	General Purpose Set	#6 ELECTRIC						
41	23'-6"	62'	General Purpose Set							
42	24'-0"	86'	No. 3 Black Border	#5 FOCUS TRACK						
43	24'-6"	86'	No. 3 Black Legs	#7 ELECTRIC						
44	25'-0"	86'	General Purpose Set							
45	25'-6"	62'	General Purpose Set							
46	26'-0"	62'	General Purpose Set	#3 BORDER		OCA	86X12			HANG CENTER
47	26'-6"	62'	General Purpose Set	#3 LEGS		OCA	20X38			26'-6" LEFT + RIGHT OF CENTER (EXTEND PIPE 9')
48	27'-0"	62'	General Purpose Set	US COLUMNS						
49	27'-6"	62'	General Purpose Set							
WELL										
50	28'-6"	62'	General Purpose Set							
51	29'-0"	62'	General Purpose Set							
52	29'-6"	62'	General Purpose Set							
53	30'-0"	62'	General Purpose Set							
54	30'-6"	62'	General Purpose Set							

55	31'-0"	86'	No. 4 Black Border						
56	31'-6"	86'	No. 4 Black Legs	#8 ELECTRIC					
57	32'-0"	86'	General Purpose Set						
58	32'-6"	62'	General Purpose Set						
59	33'-6"	86'	No. 2 Lighting Truss	#9 ELECTRIC					
60	34'-6"	62'	General Purpose Set						
61	35'-0"	62'	General Purpose Set						
62	35'-6"	62'	General Purpose Set						
WELL									
63	36'-6"	86'	General Purpose Set	#4 BORDER		OCPA	86X12		HANG CENTER
64	37'-0"	86'	General Purpose Set						
65	37'-6"	86'	General Purpose Set	BOC					HANG CENTER
66	38'-0"	86'	General Purpose Set	LEGS		OCPA	20X38		24' LEFT + RIGHT OF CENTER
67	38'-6"	86'	General Purpose Set	BLACK SCRIM		MOC			HANG CENTER
68	39'-0"	86'	General Purpose Set	PLASTIC		OCPA			HANG CENTER
69	39'-6"	86'	General Purpose Set						
70	40'-0"	86'	General Purpose Set	#10 ELECTRIC					



Rail Cue Sheet

Cue #	Lineset	Item	IN/OUT	Speed	Light	Placement	Time
-------	---------	------	--------	-------	-------	-----------	------

Pre-Show Moves

RAIL PRESET

#1	Portal Border	IN
#2	Black Scrim	IN
#3	DS Blackout Curtain	IN
#8	#1 Black Border	IN
#9	Black Legs	IN
#10	DS Column	IN
#27	#2 Black Border	IN
#28	Black Legs	IN
#29	MS Column	IN
#34	Cross	OUT
#46	#3 Black Border	IN
#47	Black Legs	IN
#48	US Column	IN
#63	#4 Black Border	IN
#65	US Blackout Curtain	OUT
#66	Legs	IN
#67	Black Scrim	IN
#68	RP	IN

ACTS 1 & 2 (64:00)

RQ 1	#3	DS Blackout Curtain	OUT	10 count	red	1/1/1	00:00
RQ 2	#2	Black Scrim	OUT	10 count	blue	2/2/1	1:00
RQ 3	#34	Cross	IN	15 count	red	143/1/1	49:00
RQ 4	trip line	Cross	OUT for tilt	15 count	red	169/1/1	57:00
RQ 5	#2	Black Scrim	IN	7 count	red	205/2/1	64:20
RQ 6	#3	DS Blackout Curtain	IN	7 count	blue	205/cut-off	64:30

INTERMISSION (20:00)

Intermission Moves

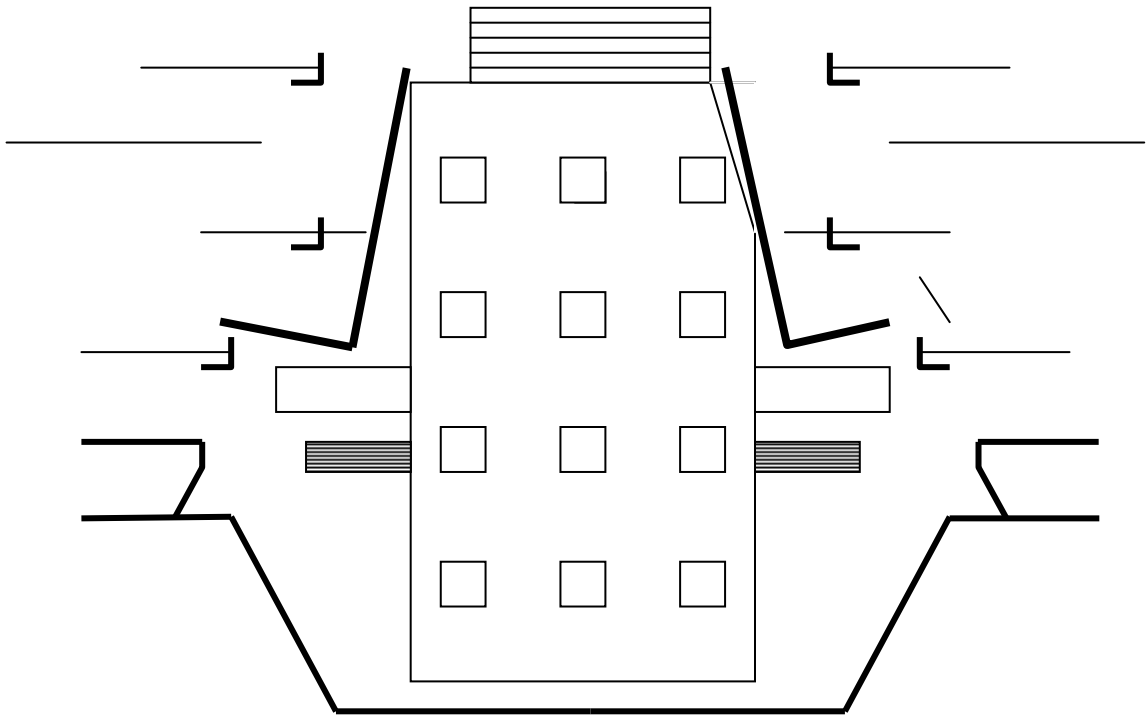
#34	Cross	OUT
-----	-------	-----

ACTS 3 & 4 (60:00)

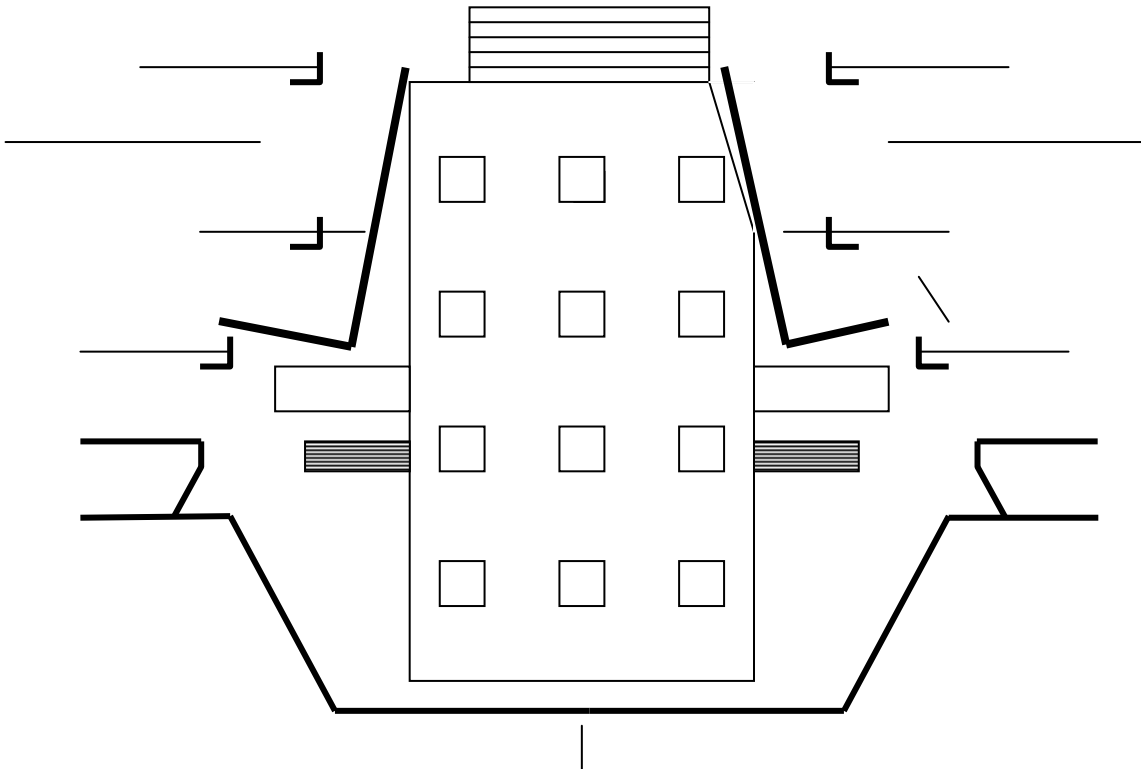
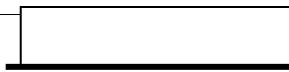
RQ 7	#3	DS Blackout Curtain	OUT	7 count	red	206/1/1	00:00
RQ 8	#2	Scrim	OUT	7 count	blue	206/4/1	00:15

Minis

Acts 1 – 3 and Act 4 (Prison Scene)



Act 4 (Outside Prison Scene)



Props List

Qty	Prop	Notes
2	Anvils	
4	Hammers	To use on the anvils
6	Stools	
2	Torches	
1	Large Flag	
13	Swords	
1	Scabbard	For COUNT
3	Cross Bows	With arrows
1	Birch Log	
3	Buckets	
2	Laddles	Inside buckets
1	Washpan	
4	Shields	
9	Crude Axes	
1	Rope	
3	Sacks	
1	Mandalin	
1	Flag	
4	Birch spears	
4	Blankets	
1	Letter	From MANRICO to LEONORA
1	Small rolled parchment	
1	Goblet	
3	Wineskins	
5	Lantern	1 for INEZ, 4 for chorus
3	Bandages	
	Tarot Cards	
	Torture Device	
6	Daggers	
16	Articles of clothing	
	Laundry Basket	
5	Gypsy Knives	
1	Sharpening Stone	
7	Cups	
1	Stake	MANRICO gets tied to
12	Nun props	Lantern, 5 bibles, 2 rosary's, holy water bucket, goblet, 2 crosses, gold orb
	Clothesline	With pieces of clothing on it
1	Nun Shawl	For LEONORA, never worn
	Rosary	For LEONORA
2	Crutches	

Costume Information & Photos

Italicized items are not available for rent.

Lenora
Act One
Pale silvery-blue 3-layer taffeta skirt w/crystal beading
Pale silvery-blue satin bodice w/embroidered sleeves
<i>Pearl drop earrings</i>
<i>Poison ring</i>
<i>Nude tights</i>
<i>T-strap character shoes</i>

Lenora
Act One
ADD:
Sky-blue satin sleeveless robe w/velvet trim
REMOVE:
Robe
ADD:
Silver taffeta hooded cap

Lenora
Act Two
Same Act I Costume
ADD:
Silver taffeta hooded cap



Azucena
Acts One & Two
<i>White corset</i>
Golden-tan linen blouse
Brown, gold and burgundy square-print embroidered underskirt
Burnt-orange w/blue square print overskirt
Brown leather belt
Feather necklace
<i>Nude tights</i>
<i>Brown sandals</i>

Ines
Acts One & Two
Blue taffeta petticoat
Dark blue taffeta boned bodice w/white transparent silk neckline
Dark blue taffeta cartridge pleated skirt
<i>Silver headband</i>
<i>Nude tights</i>
<i>Black shoes</i>

Ferrando
Acts One & Two
<i>White t-shirt</i>
Dark blue velveteen breeches
Dark blue velveteen doublet
Black hair on leather armor vest w/silver studs
<i>Black socks</i>
<i>Black knee-high boots</i>



Count di Luna
Act One
<i>White undershirt</i>
Cream blouse w/ruffled collar and cuffs
Red satin breeches w/suspenders
Red velvet doublet w/gold embroidery
<i>Black leather sword belt w/sword</i>
Red satin cape w/gold satin lining
<i>Black socks</i>
<i>Greyish-black suede boots</i>
REMOVE:
Cape

Count di Luna
Act Two
Same Act I Costume
REMOVE:
Doublet
ADD:
Black leather armor vest w/silver studs
REMOVE:
Cape

Manrico
Acts One & Two
<i>White undershirt</i>
Cream blouse w/ruffled cuffs
Dark brown breeches w/leg ties
Brown and tan print waist sash
Brown leather vest w/lighter brown leather trim
Dark brown suede cloak
<i>Dark red knee socks</i>
<i>Brown suede boots</i>



Ruiz
Acts One & Two
<i>White t-shirt</i>
Cream blouse w/band collar
Brown cord lace-up vest w/mustard brown print trim
Rusty-brown breeches
Brown leather belt
Brown speckled cloak
Golden mustard knee socks
<i>Black leather boots</i>

Female Chorus #1
Act One
as GYPSY
Burgundy petticoat
Tan blouse w/square neckline
Brown leather sleeveless bodice
Black, burgundy and green floral print skirt
Distressed tan half-apron
Ochre, green and red headscarf
<i>Nude tights</i>
Greyish brown canvas shoes

Female Chorus #2
Act One
as GYPSY
Rust silk blouse w/band collar
Khaki, grey and brown diamond print underskirt
Brown and rust print velveteen bodice
Brown wool overskirt w/multi-fleck print
Dark gold and red leaf print half-apron
Rust and brown print headscarf
<i>Nude tights</i>
<i>Rusty-brown leather huaraches</i>



Female Chorus #3
Act One
as GYPSY
Rust and dark brown print silk blouse
Distressed rust velvet lace-up bodice
Dark brown underskirt
Green, tan and red striped overskirt
Distressed brown belt
Distressed pale grey half-apron w/pockets
Green and brown square print headscarf
Silver and turquoise necklace
<i>Nude tights</i>
<i>Tan woven sandals</i>

Female Chorus #4
Act One
as GYPSY
Pale gold linen blouse
Rust and burgundy striped bodice w/blue laces
Rainbow striped underskirt
Red and tan striped overskirt w/red leaf lining
Distressed dark brown belt and satchel
Dark grey and black grid print half-apron
Metallic headband
<i>Nude tights</i>
<i>Tan suede buckle shoes</i>

Female Chorus #5
Act One
as GYPSY
Burgundy petticoat
Tan print blouse w/black buttons
Rust lace-up bodice
Wine and black vine print cotton overskirt
Tan and pale rust paisley half-apron
Brown and blue print headscarf
<i>Nude tights</i>
<i>Charcoal canvas shoes</i>



Female Chorus #6
Act One
as GYPSY
Dark olive green and yellow print blouse
Mustard, red and black circle print underskirt
Black and brown wool paisley bodice w/tan trim
Black and brown wool paisley overskirt
Orange and rust print half-apron w/pockets
Brown headband
<i>Nude tights</i>
<i>Tan canvas shoes</i>

Female Chorus #7
Act One
as GYPSY
Chocolate brown blouse
Red, rust and blue print cotton underskirt
Brown wool sleeveless bodice w/orange trim
Brown wool overskirt
Burgundy and grey striped apron
Brown headband
<i>Nude tights</i>
<i>Black canvas shoes</i>

Female Chorus #8
Act One
as GYPSY
Tan, red and brown bowtie print blouse
Cream, black and burgundy wheat print underskirt
Brown leather vest
Burgundy, rust and orange print overskirt w/teal lining
Brown headband
<i>Nude tights</i>
<i>Brown sandals w/buckles</i>



Female Chorus #9
Act One
as GYPSY
Grey and cream print cotton blouse
Tan and brown striped linen underskirt
Brown wool nubby bodice
Olive velveteen overskirt
Rust, green, red and blue striped half-apron
Dark green and yellow polka-dot headscarf
Brown wooden bead necklace
Metal blue pendant necklace
<i>Nude tights</i>
<i>Distressed tan canvas espadrille shoes</i>

Female Chorus #10
Act One
as GYPSY
Rust blouse
Brown and tan print underskirt
Dark green and black woven overskirt
Rust and dark gold print bib-apron
Black and grey headband
Gold pendant necklace
Beaded glass hemp necklace
<i>Nude tights</i>
<i>Distressed tan canvas shoes</i>

Female Chorus #11
Act One
as GYPSY
Navy and tan blend blouse
Rust underskirt
Brown, tan and red vine print cotton overskirt
Distressed grey bib-apron
Black and tan braided headband
Gold metal rope necklace
Indian metal necklace w/red gems
<i>Nude tights</i>
<i>Tan leather moccasins</i>



Female Chorus #12
Act One
as GYPSY
Pale mustard petticoat
Tan and muted red striped blouse
Blue, grey and green floral print cotton bodice
Rust ultra-suede overskirt
Distressed pale olive half-apron
Golden tan embossed leather belt
Brown headband
Red beaded Indian necklace
<i>Nude tights</i>
<i>Black huaraches</i>

All Female Chorus
Act One
as NUNS
White wimple
Black habit
White collar
White pillbox hat w/attached veil
<i>Black socks</i>
<i>Black shoes</i>

Male Chorus #1
Acts One & Two
as GYPSY
Burnt orange striped blouse w/band collar
Dark rusty brown velvet sleeveless waistcoat
Ochre twin knee breeches
Distressed golden leather apron
Black knee socks
<i>Brown sandals</i>



Male Chorus #2
Acts One & Two
as GYPSY
Pearl-grey band collar blouse
Yellow-ochre under-vest
Rust nubby over-vest
Dark brown moleskin pants
<i>Black socks</i>
<i>Brown suede lace-up boots</i>

Male Chorus #3
Acts One & Two
as GYPSY
<i>Black t-shirt</i>
Dark olive blouse
Dark red double-breasted vest
Rust wool breeches
Distressed orange half-apron w/studded pocket
Gold, brown and rust print neckerchief
Blue knee socks
<i>Brown leather lace-up shoes</i>

Male Chorus #4
Acts One & Two
as GYPSY
Cream silk band collar blouse
Charcoal double-breasted vest
Charcoal wool pants
Distressed pale sage half-apron
<i>Black socks</i>
<i>Black boots</i>



Male Chorus #5
Acts One & Two
as GYPSY
Rust and red print blouse
Distressed brown leather vest
Dark brown brushed-cotton pants
<i>Black socks</i>
<i>Dark brown lace-up boots</i>

Male Chorus #6
Acts & Two
as GYPSY
<i>Black t-shirt</i>
Pale orange linen shirt
Distressed tan quilted vest
Dark brown cotton pants
<i>Black socks</i>
<i>Black boots</i>

Male Chorus #7
Acts One & Two
as GYPSY
Tan window-pane linen shirt
Rut and orange diamond print vest
Dark brown twin pants
<i>Black socks</i>
<i>Black boots</i>



Male Chorus #8
Acts One & Two
as GYPSY
Tan collarless shirt
Distressed golden-brown suede vest
Dark brown twill pants
Blue and gold print headscarf
<i>Black socks</i>
<i>Distressed black boots</i>

Male Chorus #9
Acts One & Two
as GYPSY
Pale camel distressed pullover shirt w/laces
Muted brown and green wool kimono-style over-shirt
Brown ultrasuede knee breeches
Brown and tan print neckerchief
Tan and cream striped knee socks
<i>Dark brown sandals</i>

Male Chorus #10
Acts One & Two
as GYPSY
Brownish-grey linen lace-up shirt
Muted rust wool vest w/pockets
Drab dark-olive ultrasuede pants
Distressed golden-brown suede half-apron
<i>Black socks</i>
<i>Black boots</i>



Male Chorus #11
Acts One & Two
as GYPSY
<i>Black t-shirt</i>
Muted blue and grey print shirt
Grey vest
Dark olive ultrasuede pants
Distressed golden-brown apron w/pockets
<i>Black socks</i>
<i>Black boots</i>

Male Chorus #12
Acts One & Two
as GYPSY
Brown and tan print blouse
Brown suede vest w/shoulder laces
Rusty-brown linen pants
<i>Black socks</i>
<i>Dark brown boots</i>

Male Chorus #13
Acts One & Two
as GYPSY
Distressed pale peach blouse
Brown leather vest w/linen back
Drab dark-olive ultrasuede pants
<i>Black socks</i>
<i>Black boots</i>
ADD:
Greenish-grey wool cape



Male Chorus #14
Acts One & Two
as GYPSY
<i>Black undershirt</i>
Pale olive band-collar blouse
Black and brown striped wool vest
Charcoal wool pants
Distressed tan apron
<i>Black socks</i>
<i>Black boots</i>

Male Chorus #15
Acts One & Two
as GYPSY
Tan and olive striped blouse
Distressed brown leather peplum vest
Charcoal velvet breeches
Gold and olive paisley neckerchief
<i>Gold knee socks</i>
<i>Black boots</i>

Male Chorus #16
Acts One & Two
as GYPSY
Pale camel band-collar blouse
Dark brown distressed leather vest
Gold and rust print apron
Dark brown ultrasuede pants
<i>Black socks</i>
<i>Black boots</i>



Male Chorus #17
Acts One & Two
as GYPSY
Ochre, blue and muted red print blouse
Golden ochre kimono-style vest
Dark brown twill pants
Dark grey half-apron
<i>Black socks</i>
<i>Dark brown boots</i>

Male Chorus #18
Acts One & Two
as GYPSY
Olive floral print blouse
Distressed dark brown leather vest
Rusty-brown velvet knee breeches
Rusty-gold knee socks
<i>Dark brown sandals</i>
ADD:
Brownish-grey wool cape

Male Chorus #19
Acts One & Two
as GYPSY
Distressed tan thermal shirt
Olive-grey nubby linen jacket
Distressed golden-brown leather bib-apron
Dark olive-grey knee breeches
Blue knee socks
<i>Dark brown sandals</i>



Male Chorus #20
Acts One & Two
as GYPSY
<i>Black t-shirt</i>
Dark brown shirt
Dark brown leather peplum vest
Black linen pants
<i>Black socks</i>
<i>Black boots</i>

Male Chorus #21
Acts One & Two
as GYPSY
Cream and gold leaf print blouse
Rusty-brown linen vest w/tan trim
Dark brown ultrasuede pants
Distressed tan twin-apron
<i>Black socks</i>
<i>Black boots</i>

Male Chorus #22
Acts One & Two
as GYPSY
Distressed pale sage blouse
Olive linen over-shirt
Dark brown leather vest
Dark brown ultrasuede pants
<i>Brown and black beaded necklace</i>
<i>Black socks</i>
<i>Black boots</i>



Male Chorus #23
Acts One & Two
as GYPSY
Tan and olive striped blouse
Rusty-brown nubby linen vest w/tan trim
Drab olive ultrasuede pants
Distressed tan leather half-apron
<i>Black socks</i>
<i>Black boots</i>

Male Chorus #24
Acts One & Two
as GYPSY
Gold and black paisley blouse
Rust nubby linen vest
Brown ultrasuede pants
Distressed rusty-brown leather apron
<i>Black socks</i>
<i>Black boots</i>
ADD:
Greyish-brown wool cape

Male Chorus #25
Acts One & Two
as GYPSY
Tan nubby linen shirt
Light brown linen kimono-style vest
Dark brown ultrasuede pants
<i>Black socks</i>
<i>Black boots</i>



Male Chorus #26
Acts One & Two
as GYPSY
Muted blue and grey print shirt w/cream collar
Distressed dark grey vest
Rust and tan print apron
Brown moleskin pants
<i>Black socks</i>
<i>Black boots</i>

Male Chorus #27
Acts One & Two
as GYPSY
Pale orange linen blouse
Distressed dark brown leather vest
Dark brown moleskin pants
Dark brown striped neckerchief
<i>Black socks</i>
<i>Black boots</i>



Male Chorus
Acts One & Two
as SOLDIERS
<i>Black t-shirt</i>
Navy doublet
Black linen pants
<i>Black socks</i>
<i>Black boots</i>

Male Chorus
Acts One & Two
as SOLDIERS
Tan thermal undershirt
Navy doublet
Black linen pants
<i>Black socks</i>
<i>Black boots</i>

Male Chorus
Acts One & Two
as SOLDIERS
<i>Black t-shirt</i>
Navy doublet
Black quilted buckle-up vest
Black linen pants
<i>Black socks</i>
<i>Black boots</i>



Production Photos





